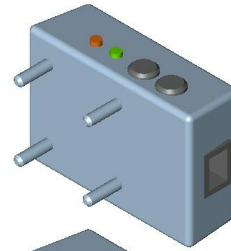


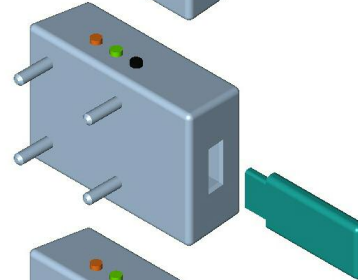


# Data Output Modules for Medlab Desktop Devices

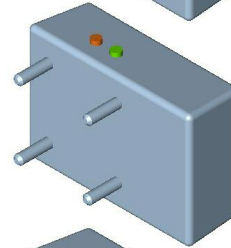
Ethernet Network Adapter 1), 3)



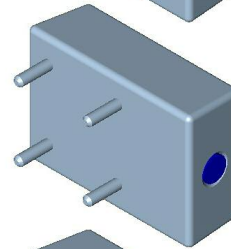
USB Memory Stick Adapter 1), 3), 5), 7)



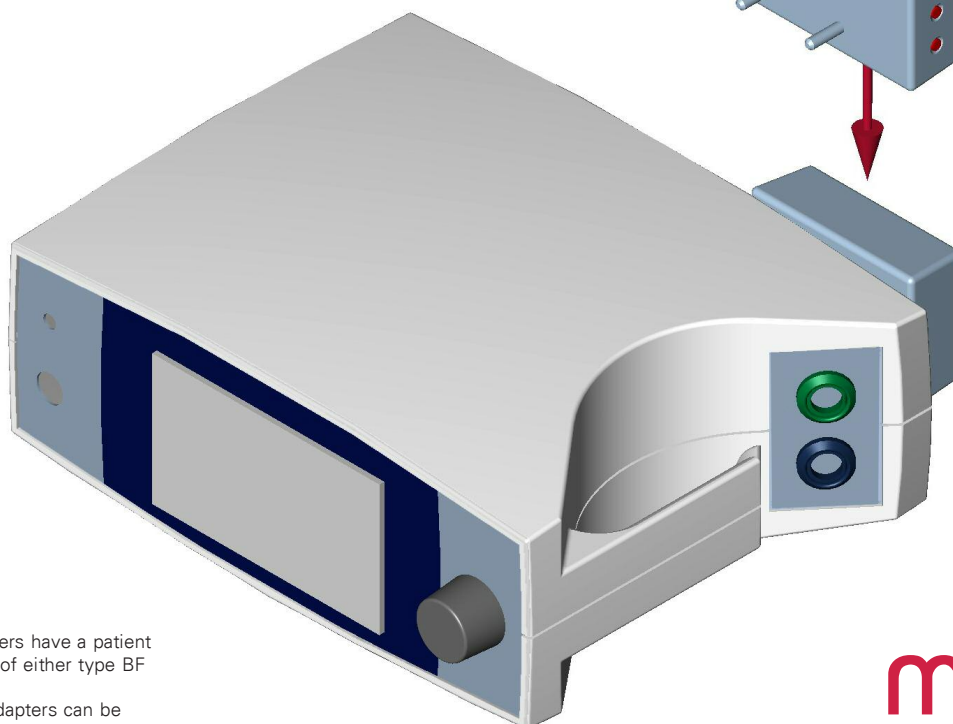
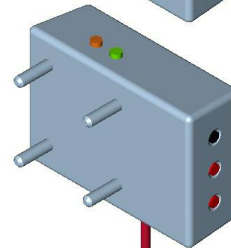
POX·Net Wireless Adapter 1), 2), 3), 4)



Adapter for Nurse Call Systems 1), 2), 3), 4), 5), 6)



Analog Output (3 Channels) 1), 2), 3), 4), 5)



- 1) P-OX100L
- 2) P-OX100
- 3) PEARL100L
- 4) PEARL100
- 5) CAP10
- 6) VITRO
- 7) VITROmap

All adapters have a patient isolation of either type BF or CF.  
Not all adapters can be used with all desktop devices.